



YEAR 7

ART

COLOUR

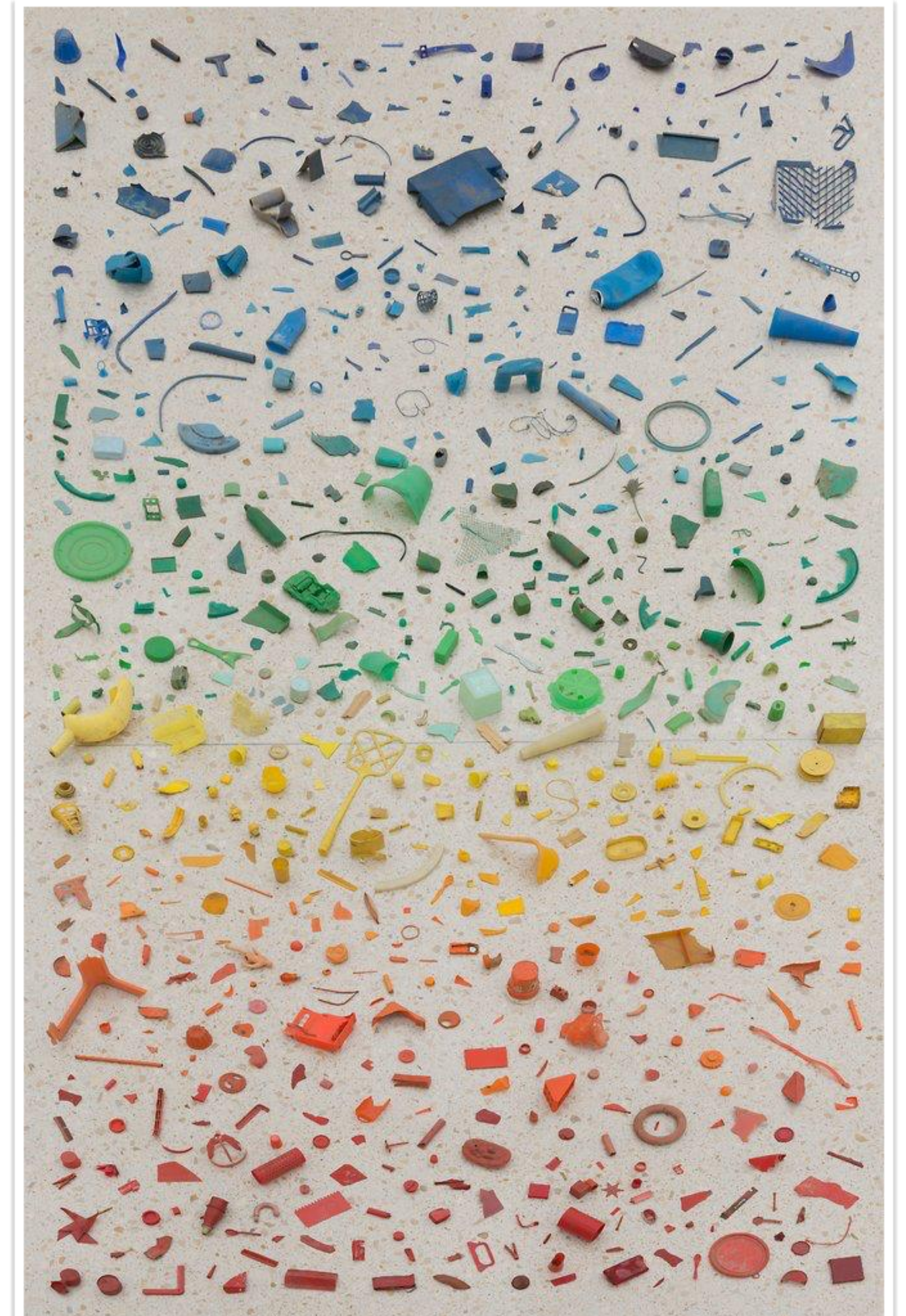


Task 1

YWBAT: Respond creatively to the work of Artist Tony Cragg

Collect objects/items of different colours and assemble them to create your own version of Artist Tony Craggs work. You could use food items, toys or found objects? This style of work is called an **Assemblage**.

Take a photograph of your work and submit via Classcharts to your subject teacher.



Task 2

YWBAT: Demonstrate your understanding of complimentary colour

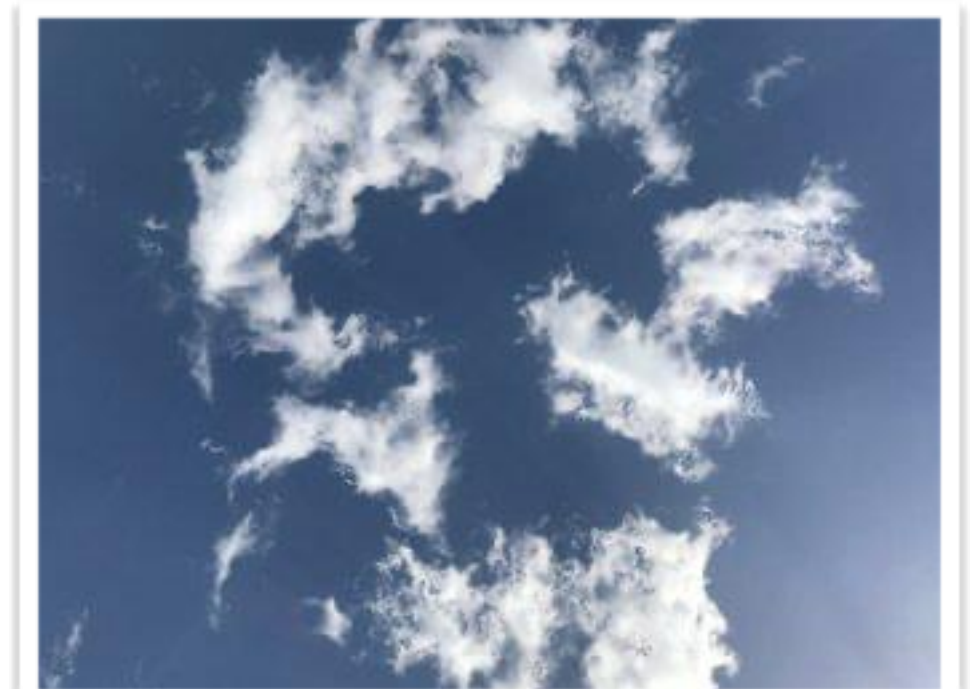
Using this link rework famous masterpieces in complimentary colours. Save these and send them to your teacher via Classcharts [TATE COLOUR](#)



Task 3

YWBAT: Explore your environment and identify colour compositions

Walk around your house and garden and take interesting abstracted images of colourful things. Capture 3 warm colours, 3 cold colours and the 3 Primary colours. Send your images to you teacher via class charts.





YEAR 7

ART

INSECTS

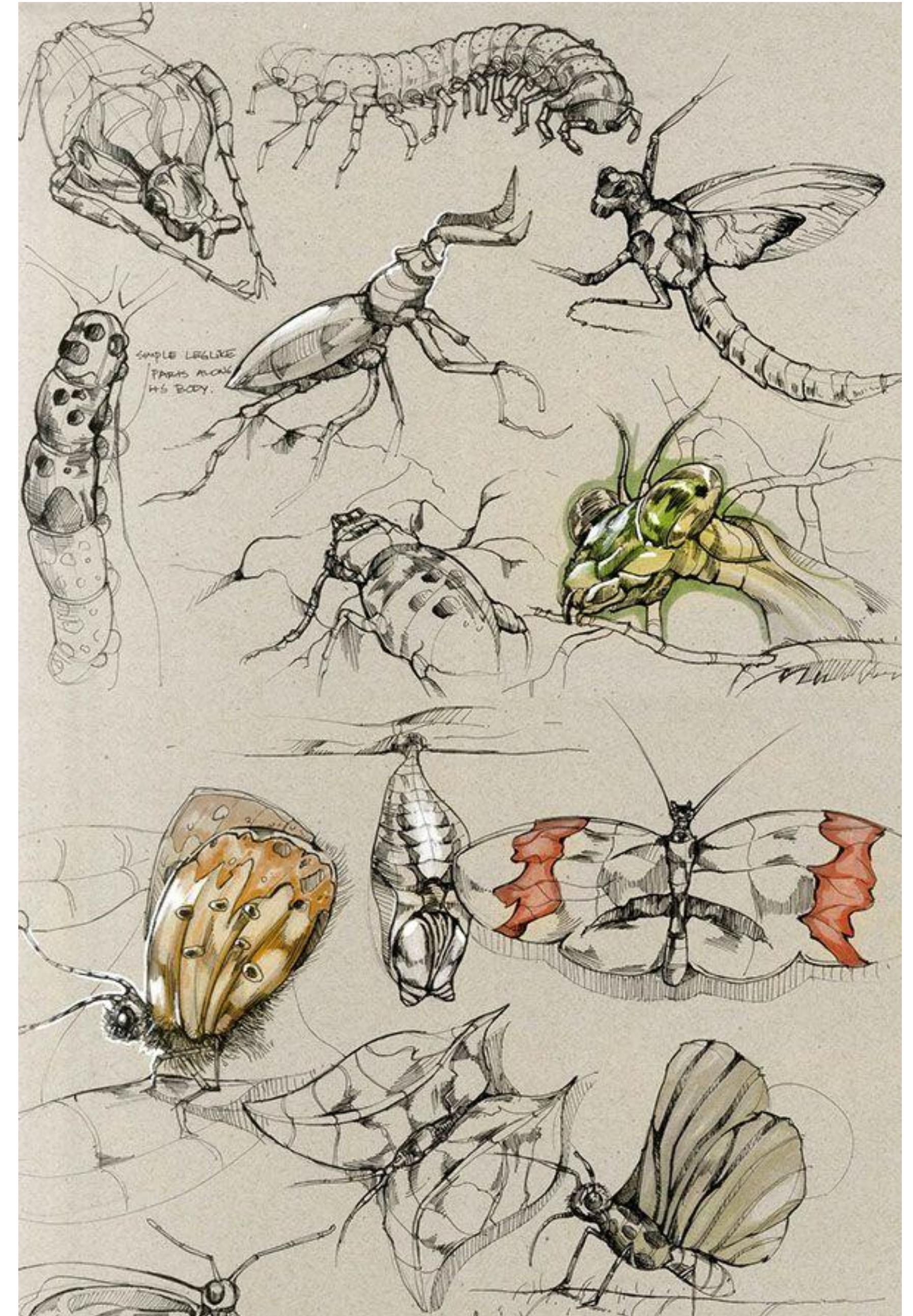


Task 1

YWBAT: Explore your environment

Look around your environment, what bugs and insects can you find. Create small sketches on an A4 sheet of paper of your exploits and write notes about where you found them.

ARTISTS TIP: Why not add some colour to your work



TASK 2

YWBAT: Produce drawing/painting inspired by the work of an Artist.

Investigate the work of Artist [Cornelia Hesse-Honegger](#) she creates beautiful studies of insects impacted by the horrors of the Chernobyl disaster.

Can you paint your own Hesse-Honegger inspired insect. You could copy one of her insects or draw from your own.

ARTIST TIP: Use Watercolours to get real quality in your paint work, you could develop this with pen or pencil to add tone and detail.



Task 3

YWBAT: Create a recycled Insect out of junk

Collect rubbish and recyclable material to create your own insect.

Take a photo and send to your teacher

ARTIST TIP: Plan your insect design, you could do a sketch first before you start building.





YEAR 7

ART

'O'KEEFE





Georgia O'Keeffe

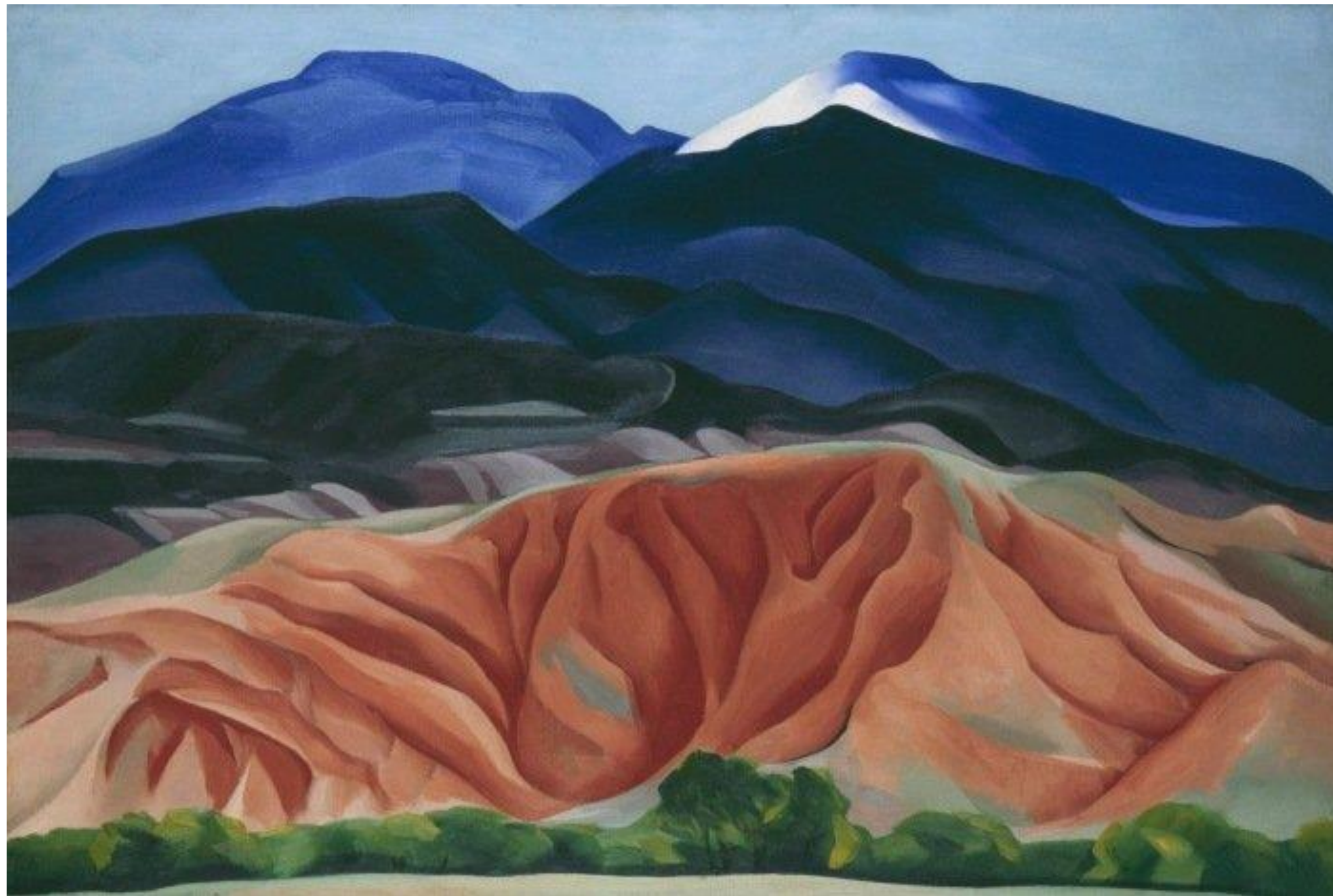
1887 – 1986



- One of the most significant artists of the 20th century
- Renowned for her contribution to modern art.
- Her unique and new way of painting nature, simplifying its shapes and forms meant that she was called a pioneer



Georgia O'Keeffe married Alfred Stieglitz - Look at how their work has similarities!



O'Keeffe moved to New Mexico where she was captivated by the landscape - Often working from the back of her custom car in the middle of nowhere!



Task 1

YWBAT: Explore your environment

Look around your environment, take photos of the flowers that inspired Georgia O'Keeffe.

Can you present as pptx with at least three images.

ARTISTS TIP: Get close to your subject. This is called a Macro image!



TASK 2

YWBAT: Research Artist Georgia O'Keeffe.

Investigate the work of Artist
Georgia O'Keeffe.

Create a Powerpoint with images
of her work and facts about her
life as an Artist.

ARTIST TIP: Write about how you
feel about her work



Georgia O'Keeffe

YWBAT: Create a colour study inspired by O'Keeffe

Task 3

- Draw a close up of one of your flower photos.
- Ensure to make an interesting composition
- Colour using watercolours or pencils

